

HomePlug Universal MP3 Dock

With the GigaFast Multi-Zone Whole-House Audio System, Audio can be distributed from four audio sources to a total of eight selectable speakers throughout the house via HomePlug technology. Advanced algorithms even allow you to play synchronized music throughout a house.

The Universal Mp3 Dock allows any digital audio player to play synchronized audio thru the house to an audio output devices (PE881-RX) in the same or different rooms. The Universal Mp3 Dock comes complete with a past thru USB port and two additional inputs, RCA and 3.5mm audio jacks for up to 2 additional sources. Then connect the receiver node (PE881-RX) via RCA jacks to any amplified speaker system such as boom boxes, audio receivers, powered speakers and a host of other products.

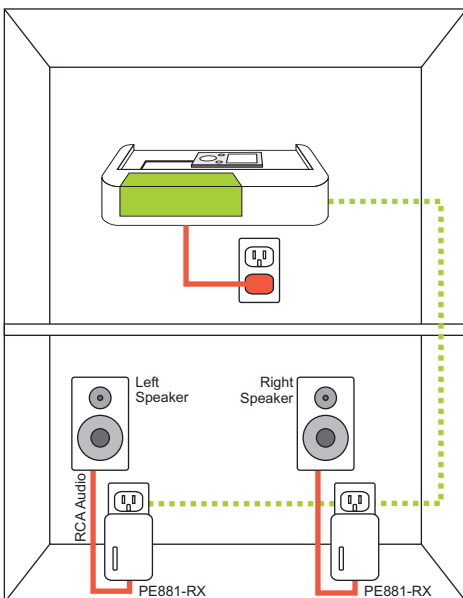
Up to four music “zones” can be defined to access up to four music sources. The installation is as easy as just plugging them into the wall!



Features:

Standards	HomePlug 1.0 14Mbps / Arkados HomePlug+ 28Mbps
Security	56-bit DES Encryption
Data Transfer Rate	14 / 28 Mbps
Certification	HomePlug Powerline Specification 1.0
Modulation Schemes	8PSK, QPSK, DBPSK, ROBO Carrier Modulation
Frequency Band	4.3 ~ 20.9 Mhz
Operation Range	Estimated range of 300m in wall power lines
Operating Temperature	0°C to 40°C ambient temperature
Storage Temperature	-20°C to 70°C ambient temperature
Humidity	5 to 90% maximum (non-condensing)
Power Supply	100 ~ 240V @ 50/60Hz Internal
Operating Temperature	0°C ~ 50°C
Humidity	5% ~ 90%
Housing	Plastic
Certifications	FCC Class B / CE Mark / HomePlug Certification

Application:



Specifications:

Transmit Node (PE883-UD):

Connectors (Front)	1 x 3.5mm Audio Jack (MP3 Player Input) 1 x USB plug for charging or synchronizing of Mp3 player
Connectors (Rear)	1 x 3.5mm Audio Jack (Rear Input) 1 x RCA Connector Inputs (L&R Channel) 1 x Rear USB plug for player synchronization to PC
Push Button	1 x Button Selects audio “input” to transmit 1 x Button Selects audio “zone” to transmit
LEDs	3 x Input Selection Display LED (MP3 / Rear 3.5mm / RCA) 4 x Zone LED - Indicates transmit “zone”
IR Connector	Connect IR cable to be pointed at source devices IR port for remote control

Receive Node (PE881-RX):

Connectors	2 RCA Connector Outputs
Audio Modes	Left Channel Only / Right Channel Only / Stereo
Synchronization	All same “zone” audio is synchronized
Push Button	Selects audio “zone” to receive
LEDs	1 x Link/Act LED - ON: Source Found - Blinking: Audio Activity
IR Port	4 x Zone LED - Indicates receive “zone” - ON: Source found in “zone” - Blinking: Searching “zone” for music source Receive port allows control of music source in “zone” by passing IR data back to “zone” source.